



Professional

ICD-10-CM Professional for Hospitals

The complete official code set
Codes valid from October 1, 2024
through September 30, 2025

SAMPLE



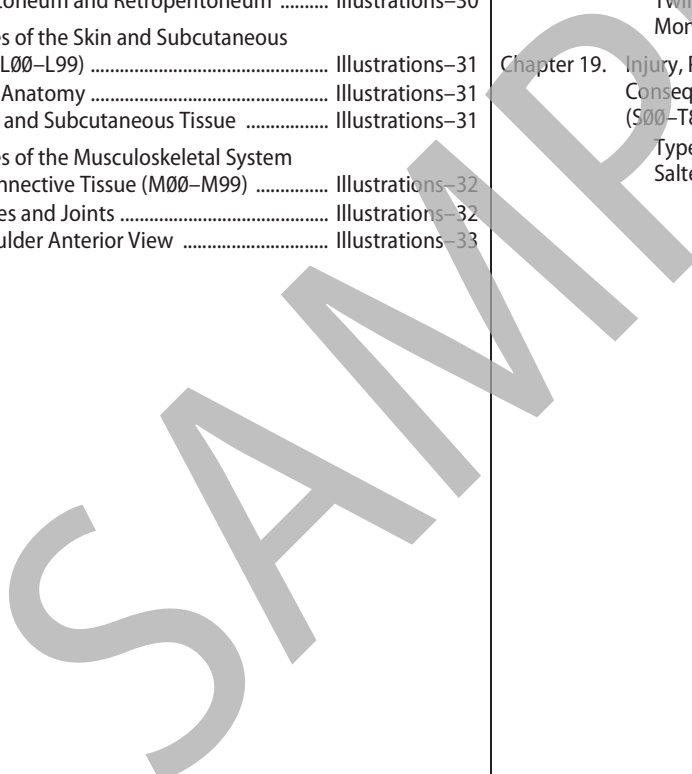
2025

optumcoding.com

Contents

How to Use ICD-10-CM Professional for Hospitals 2025	iii	Chapter 14. Diseases of Genitourinary System (N00–N99).....	861
Introduction	iii	Chapter 15. Pregnancy, Childbirth, and the Puerperium (O00–O9A)	883
What’s New for 2025.....	iii	Chapter 16. Certain Conditions Originating in the Perinatal Period (P00–P96)	923
Conversion Table	iii	Chapter 17. Congenital Malformations, Deformations, and Chromosomal Abnormalities (Q00–Q99)	937
10 Steps to Correct Coding.....	iii	Chapter 18. Symptoms, Signs, and Abnormal Clinical and Laboratory Findings, Not Elsewhere Classified (R00–R99)	957
Official ICD-10-CM Guidelines for Coding and Reporting	iii	Chapter 19. Injury, Poisoning, and Certain Other Consequences of External Causes (S00–T88)	979
Indexes	iii	Chapter 20. External Causes of Morbidity (V00–Y99)	1187
Index to Diseases and Injuries	iii	Chapter 21. Factors Influencing Health Status and Contact with Health Services (Z00–Z99)	1255
Neoplasm Table.....	iii	Chapter 22. Codes for Special Purposes (U00–U85).....	1295
Table of Drugs and Chemicals	iii		
External Causes Index	iii	Illustrations	Illustrations–1
Index Notations	iv	Chapter 3. Diseases of the Blood and Blood-forming Organs and Certain Disorders Involving the Immune Mechanism (D50–D89)	Illustrations–1
Tabular List of Diseases	iv	Red Blood Cells	Illustrations–1
Code and Code Descriptions	v	White Blood Cell	Illustrations–1
Tabular Notations	v	Platelet	Illustrations–2
Official Notations	v	Coagulation	Illustrations–2
Optum Notations	vi	Spleen Anatomical Location and External Structures	Illustrations–3
Icons	vi	Spleen Interior Structures	Illustrations–3
Color Bars	viii	Chapter 4. Endocrine, Nutritional, and Metabolic Diseases (E00–E89)	Illustrations–4
Chapter-Level Notations	viii	Endocrine System	Illustrations–4
Illustrations	viii	Thyroid	Illustrations–5
		Thyroid and Parathyroid Glands	Illustrations–5
What’s New for 2025	ix	Pancreas	Illustrations–6
Official Updates	ix	Anatomy of the Adrenal Gland	Illustrations–6
Proprietary Updates	x	Structure of an Ovary	Illustrations–7
		Testis and Associated Structures	Illustrations–7
Conversion Table of ICD-10-CM Codes	xi	Thymus	Illustrations–8
10 Steps to Correct Coding	xiii	Chapter 6. Diseases of the Nervous System (G00–G99) ..	Illustrations–9
ICD-10-CM Official Guidelines for Coding and Reporting	Coding Guidelines–1	Brain	Illustrations–9
ICD-10-CM Index to Diseases and Injuries	1	Cranial Nerves	Illustrations–9
ICD-10-CM Neoplasm Table	343	Peripheral Nervous System	Illustrations–10
ICD-10-CM Table of Drugs and Chemicals	362	Spinal Cord and Spinal Nerves	Illustrations–11
ICD-10-CM Index to External Causes.....	412	Nerve Cell	Illustrations–12
ICD-10-CM Tabular List of Diseases and Injuries	449	Trigeminal and Facial Nerve Branches	Illustrations–12
Chapter 1. Certain Infectious and Parasitic Diseases (A00–B99), U07.1, U09.9	449	Chapter 7. Diseases of the Eye and Adnexa (H00–H59)	Illustrations–13
Chapter 2. Neoplasms (C00–D49)	475	Eye	Illustrations–13
Chapter 3. Diseases of the Blood and Blood-forming Organs and Certain Disorders Involving the Immune Mechanism (D50–D89)	515	Posterior Pole of Globe/Flow of Aqueous Humor	Illustrations–13
Chapter 4. Endocrine, Nutritional, and Metabolic Diseases (E00–E89)	529	Lacrimal System	Illustrations–14
Chapter 5. Mental, Behavioral and Neurodevelopmental Disorders (F01–F99)	553	Eye Musculature	Illustrations–14
Chapter 6. Diseases of the Nervous System (G00–G99)	585	Eyelid Structures	Illustrations–14
Chapter 7. Diseases of the Eye and Adnexa (H00–H59)	609	Chapter 8. Diseases of the Ear and Mastoid Process (H60–H95)	Illustrations–15
Chapter 8. Diseases of the Ear and Mastoid Process (H60–H95)	647	Ear Anatomy	Illustrations–15
Chapter 9. Diseases of the Circulatory System (I00–I99)	659	Chapter 9. Diseases of the Circulatory System (I00–I99)	Illustrations–16
Chapter 10. Diseases of the Respiratory System (J00–J99), U07.0	705	Anatomy of the Heart	Illustrations–16
Chapter 11. Diseases of the Digestive System (K00–K95)	723	Heart Cross Section	Illustrations–16
Chapter 12. Diseases of the Skin and Subcutaneous Tissue (L00–L99)	749	Heart Valves	Illustrations–17
Chapter 13. Diseases of the Musculoskeletal System and Connective Tissue (M00–M99)	771	Heart Conduction System	Illustrations–17
		Coronary Arteries	Illustrations–18
		Arteries	Illustrations–19

Veins	Illustrations–20	Shoulder Posterior View	Illustrations–33
Internal Carotid and Vertebral Arteries and Branches	Illustrations–21	Elbow Anterior View	Illustrations–33
External Carotid Artery and Branches	Illustrations–21	Elbow Posterior View	Illustrations–33
Branches of Abdominal Aorta	Illustrations–22	Hand	Illustrations–33
Portal Venous Circulation	Illustrations–22	Hip Anterior View	Illustrations–34
Lymphatic System	Illustrations–23	Hip Posterior View	Illustrations–34
Axillary Lymph Nodes	Illustrations–24	Knee Anterior View	Illustrations–34
Lymphatic System of Head and Neck	Illustrations–24	Knee Posterior View	Illustrations–34
Lymphatic Capillaries	Illustrations–25	Foot	Illustrations–34
Lymphatic Drainage	Illustrations–25	Muscles.....	Illustrations–35
Chapter 10. Diseases of the Respiratory System (J00–J99), U07.0	Illustrations–26	Chapter 14. Diseases of Genitourinary System (N00–N99)	Illustrations–36
Respiratory System	Illustrations–26	Urinary System	Illustrations–36
Upper Respiratory System	Illustrations–27	Male Genitourinary System	Illustrations–37
Lower Respiratory System	Illustrations–27	Female Internal Genitalia	Illustrations–37
Paranasal Sinuses	Illustrations–27	Female Genitourinary Tract Lateral View	Illustrations–37
Lung Segments	Illustrations–28	Chapter 15. Pregnancy, Childbirth, and the Puerperium (O00–O9A)	Illustrations–38
Alveoli	Illustrations–28	Term Pregnancy – Single Gestation	Illustrations–38
Chapter 11. Diseases of the Digestive System (K00–K95)	Illustrations–29	Twin Gestation–Dichorionic–Diamniotic (DI-DI)	Illustrations–38
Digestive System	Illustrations–29	Twin Gestation–Monochorionic–Diamniotic (MO-DI)	Illustrations–39
Omentum and Mesentery	Illustrations–30	Twin Gestation–Monochorionic–Monoamniotic (MO-MO)	Illustrations–39
Peritoneum and Retroperitoneum	Illustrations–30	Chapter 19. Injury, Poisoning, and Certain Other Consequences of External Causes (S00–T88)	Illustrations–40
Chapter 12. Diseases of the Skin and Subcutaneous Tissue (L00–L99)	Illustrations–31	Types of Fractures	Illustrations–40
Nail Anatomy	Illustrations–31	Salter-Harris Fracture Types	Illustrations–40
Skin and Subcutaneous Tissue	Illustrations–31		
Chapter 13. Diseases of the Musculoskeletal System and Connective Tissue (M00–M99)	Illustrations–32		
Bones and Joints	Illustrations–32		
Shoulder Anterior View	Illustrations–33		



Age Edits

N Newborn Age: 0

These diagnoses are intended for newborns and neonates and the patient's age must be 0 years.

N47.0 Adherent prepuce, newborn N ♂

P Pediatric Age: 0-17

These diagnoses are intended for children and the patient's age must be between 0 and 17 years.

L21.1 Seborrheic infantile dermatitis P

M Maternity Age: 9-64

These diagnoses are intended for childbearing patients between the age of 9 and 64 years.

O02.9 Abnormal product of conception, unspecified M ♀

A Adult Age: 15-124

These diagnoses are intended for patients between the age of 15 and 124 years.

R54 Age-related physical debility A
 Frailty
 Old age
 Senescence
 Senile asthenia
 Senile debility
EXCLUDES1 *age-related cognitive decline (R41.81)*
sarcopenia (M62.84)
senile psychosis (F03)
senility NOS (R41.81)

Sex Edits

♂ Male diagnosis only

Q98.0 Klinefelter syndrome karyotype 47, XXY ♂

♀ Female diagnosis only

N35.12 Postinfective urethral stricture, not elsewhere classified, female ♀

H1 - H14 Hospital Acquired Condition (HAC)

These icons identify codes that are high-cost and/or high-volume (CC or MCC) that when assigned as a secondary diagnosis result in assignment of a case to a higher-paying MS-DRG. The condition or diagnosis represented by these codes is considered reasonably preventable through the application of evidence-based guidelines. If the condition is not present on admission (meaning it developed during the hospital admission), the case will not group to the higher-paying MS-DRG based solely upon the reporting of the HAC code. Many of these HACs are conditional and are based on reporting the specific diagnosis code(s) in combination with certain procedure codes.

Note: Hospital-acquired conditions do not impact MS-LTC-DRG assignment.

N15.1 Renal and perinephric abscess MCC H6

CC Condition

This icon identifies a complication or comorbidity diagnosis that may affect DRG assignment. A complication or comorbidity diagnosis, CC condition, is defined as a significant acute disease, a significant acute manifestation of a chronic disease, an advanced or end-stage chronic disease, or a chronic disease associated with systemic physiological decompensation and debility that have consistently greater impact on hospital resources.

G90.59 Complex regional pain syndrome I of other specified site CC

MCC Condition

This icon identifies a major complication or comorbidity diagnosis that may affect DRG assignment. An MCC condition meets the same criteria as a CC condition but is associated with a higher acuity level and hospital resource consumption is expected to be higher than that for a CC condition. There are fewer conditions that meet the criteria as an MCC than those for a CC condition.

S35.238 Other injury of inferior mesenteric artery MCC

Note: The assignment of an MS-DRG or MS-LTC-DRG often depends on the presence or absence of a secondary diagnosis code that is designated as an MCC or CC. However, in some instances the MCC or CC designation for that secondary diagnosis code is negated due to its relationship with the principal diagnosis; this is referred to as CC exclusion. The ICD-10 MS-DRG Definitions Manual included with the IPPS final rule provides a list of all principal diagnosis codes that would render ineffective the MCC/CC designation for a particular ICD-10-CM code when used as a secondary diagnosis. Optum has provided this CC exclusion list in an easily searchable data file, which can be accessed at the following:

<https://www.optumcoding.com/ProductUpdates/>
 Title: "2024 ICD-10-CM for Hospitals CC Excludes Data File"
 Password: XXXXXX

UNS Unspecified Site

This icon identifies codes that are considered an MCC or CC but lack specificity in regard to their anatomical location. The medical record documentation should be reviewed carefully, to ensure that no other code within the same category or subcategory can be assigned for greater specificity.

G81.00 Flaccid hemiplegia affecting unspecified side CC UNS HCC

UPD Unacceptable Principal Diagnosis

This icon identifies codes that should not be assigned as principal diagnosis for *inpatient* admissions. Codes with an unacceptable principal diagnosis edit are considered supplementary — describing circumstances that influence an individual's health status or an additional code — identifying conditions that are not specific manifestations but may be due to an underlying cause.

T48.5X5 Adverse effect of other anti-common-cold drugs UPD

HIV HIV-related Condition

This icon identifies codes that are considered a major HIV-related diagnosis. When the condition is coded in combination with a diagnosis of human immunodeficiency virus (HIV), code B20, the case will move from MS-DRG/MS-LTC-DRG 977 to MS-DRGs/MS-LTC-DRGs 974-976.

G96.9 Disorder of central nervous system, unspecified HIV

Conversion Table of ICD-10-CM Codes

The FY 2025 (October 1, 2024-September 30, 2025) Conversion Table for new ICD-10-CM codes is provided to assist users in data retrieval. For each new code the table shows its previously assigned code equivalent. Asterisks identify new codes added to the classification April 1, 2024.

Code Assignment Beginning 10/1/2023	Previous Code(s) Assignment	Code Assignment Beginning 10/1/2023	Previous Code(s) Assignment	Code Assignment Beginning 10/1/2023	Previous Code(s) Assignment	Code Assignment Beginning 10/1/2023	Previous Code(s) Assignment	Code Assignment Beginning 10/1/2023	Previous Code(s) Assignment	Code Assignment Beginning 10/1/2023	Previous Code(s) Assignment
A41.54	A41.59	G20.C	G20	H50.671	H50.69	M80.0B1G	M80.0AXG	N06.29	N06.2	T56.821D	T56.891D
B96.83	B96.89	G23.3	G23.8	H50.672	H50.69	M80.0B1K	M80.0AXK	Q26.641	Q26.611	T56.821S	T56.891S
D13.91	D13.9	G31.80	G31.89	H50.679	H50.69	M80.0B1P	M80.0AXP	Q26.642	Q26.612	T56.822A	T56.892A
D13.99	D13.9	G31.86	G31.89	H50.681	H50.69	M80.0B1S	M80.0AXS	Q26.643	Q26.613	T56.822D	T56.892D
D48.110	D48.1	G37.81	G37.8	H50.682	H50.69	M80.0B2A	M80.0AXA	Q26.649	Q26.619	T56.822S	T56.892S
D48.111	D48.1	G37.89	G37.8	H50.689	H50.69	M80.0B2D	M80.0AXD	Q90.41	Q90.4	T56.823A	T56.893A
D48.112	D48.1	G40.C01	G40.301	H57.8A1	H57.89	M80.0B2G	M80.0AXG	Q90.49	Q90.4	T56.823D	T56.893D
D48.113	D48.1	G40.C09	G40.309	H57.8A2	H57.89	M80.0B2K	M80.0AXK	Q44.70	Q44.7	T56.823S	T56.893S
D48.114	D48.1	G40.C11	G40.311	H57.8A3	H57.89	M80.0B2P	M80.0AXP	Q44.71	Q44.7	T56.824A	T56.894A
D48.115	D48.1	G40.C19	G40.319	H57.8A9	H57.89	M80.0B2S	M80.0AXS	Q44.79	Q44.7	T56.824D	T56.894D
D48.116	D48.1	G43.E01	G43.801	I1A.0	I10-I15.9	M80.0B9A	M80.0AXA	Q75.001	Q75.0	T56.824S	T56.894S
D48.117	D48.1	G43.E09	G43.809	I20.81	I20.8	M80.0B9D	M80.0AXD	Q75.002	Q75.0	*T74.A1XA	T74.91XA
D48.118	D48.1	G43.E11	G43.811	I20.89	I20.8	M80.0B9G	M80.0AXG	Q75.009	Q75.0	*T74.A1XD	T74.91XD
D48.119	D48.1	G43.E19	G43.819	I21.B	I21.A9	M80.0B9K	M80.0AXK	Q75.01	Q75.0	*T74.A1XS	T74.91XS
D48.19	D48.1	G90.B	G90.8	I24.81	I24.8	M80.0B9P	M80.0AXP	Q75.021	Q75.0	*T74.A2XA	T74.92XA
D57.04	D57.09	G93.42	G93.49	I24.89	I24.8	M80.0B9S	M80.0AXS	Q75.022	Q75.0	*T74.A2XD	T74.92XD
D57.214	D57.218	G93.43	G93.49	I25.85	I25.89	M80.8B1A	M80.80XA	Q75.029	Q75.0	*T74.A2XS	T74.92XS
D57.414	D57.418	G93.44	G93.49	I47.10	I47.1	M80.8B1D	M80.80XD	Q75.03	Q75.0	*T76.A1XA	T76.91XA
D57.434	D57.438	H36.811	H35.20-H35.23	I47.11	I47.1	M80.8B1G	M80.80XG	Q75.041	Q75.0	*T76.A1XD	T76.91XD
D57.454	D57.458	H36.812	H35.20-H35.23	I47.19	I47.1	M80.8B1K	M80.80XK	Q75.042	Q75.0	*T76.A1XS	T76.91XS
D57.814	D57.818	H36.813	H35.20-H35.23	J15.61	J15.6	M80.8B1P	M80.80XP	Q75.049	Q75.0	*T76.A2XA	T76.92XA
D61.02	D61.09	H36.818	H35.20-H35.23	J15.69	J15.6	M80.8B1S	M80.80XS	Q75.051	Q75.0	*T76.A2XD	T76.92XD
D89.84	D89.89	H36.819	H35.20-H35.23	J44.81	J42	M80.8B2A	M80.80XA	Q75.052	Q75.0	*T76.A2XS	T76.92XS
E20.810	E20.8	H36.821	H35.20-H35.23	J44.89	J42	M80.8B2D	M80.80XD	Q75.058	Q75.0	W44.8XXA	Codes in Categories T15-T19
E20.811	E20.8	H36.822	H35.20-H35.23	J4A.0	J44.0-J44.1; J44.9	M80.8B2G	M80.80XG	Q75.08	Q75.0	W44.8XXD	Codes in Categories T15-T19
E20.812	E20.8	H36.823	H35.20-H35.23	J4A.8	J44.0-J44.1; J44.9	M80.8B2K	M80.80XK	Q87.83	Q87.89	W44.8XXS	Codes in Categories T15-T19
E20.818	E20.8	H36.829	H35.20-H35.23	J4A.9	J44.0-J44.1; J44.9	M80.8B2P	M80.80XP	Q87.84	Q87.89	W44.9XXA	Codes in Categories T15-T19
E20.819	E20.8	H36.89	H35.20-H35.23	K35.200	K35.20	M80.8B2S	M80.80XS	Q87.85	Q87.89	W44.9XXD	Codes in Categories T15-T19
E20.89	E20.8	H50.621	H50.69	K35.201	K35.20	M80.8B9A	M80.80XA	Q93.52	Q93.59	W44.9XXS	Codes in Categories T15-T19
E74.05	E74.09	H50.622	H50.69	K35.209	K35.20	M80.8B9D	M80.80XD	R09.A0	R09.89	W44.9XXA	Codes in Categories T15-T19
E75.27	E75.29	H50.629	H50.69	K35.210	K35.21	M80.8B9G	M80.80XG	R09.A1	R09.89	W44.9XXD	Codes in Categories T15-T19
E75.28	E75.29	H50.631	H50.69	K35.211	K35.21	M80.8B9K	M80.80XK	R09.A2	R09.89	W44.9XXS	Codes in Categories T15-T19
E79.81	E79.8	H50.632	H50.69	K35.219	K35.21	M80.8B9P	M80.80XP	R09.A9	R09.89	W44.A0XA	Codes in Categories T15-T19
E79.82	E79.8	H50.639	H50.69	K63.8211	K63.89	M80.8B9S	M80.80XS	R40.2A	R40.20	W44.A0XD	Codes in Categories T15-T19
E79.89	E79.8	H50.641	H50.69	K63.8212	K63.89	N02.B1	N02.0-N02.1	R92.30	R92.2	W44.A0XS	Codes in Categories T15-T19
E88.43	E88.49	H50.642	H50.69	K63.8219	K63.89	N02.B2	N02.1	R92.311	R92.2	W44.A1XA	Codes in Categories T15-T19
E88.810	E88.81	H50.649	H50.69	K63.822	K63.89	N02.B3	N02.2	R92.312	R92.2	W44.A1XD	Codes in Categories T15-T19
E88.811	E88.81	H50.651	H50.69	K63.8229	K63.89	N02.B4	N02.2	R92.313	R92.2	W44.A1XS	Codes in Categories T15-T19
E88.818	E88.81	H50.652	H50.69	K68.2	K68.9	N02.B5	N02.3	R92.321	R92.2	W44.A2XA	Codes in Categories T15-T19
E88.819	E88.81	H50.659	H50.69	K68.3	K68.9	N02.B6	N02.5	R92.322	R92.2	W44.A2XD	Codes in Categories T15-T19
E88.A	R64	H50.661	H50.69	K90.821	K90.89	N02.B9	N02.8	R92.323	R92.2	W44.A2XS	Codes in Categories T15-T19
G11.5	G11.8 and E23.0 and K00.0	H50.662	H50.69	K90.822	K90.89	N04.20	N04.2	R92.331	R92.2	W44.A2XD	Codes in Categories T15-T19
G11.6	G11.8	H50.669	H50.69	K90.829	K90.89	N04.21	N04.2	R92.332	R92.2	W44.A2XS	Codes in Categories T15-T19
G20.A1	G20	H50.669	H50.69	K90.83	K90.89	N04.22	N04.2	R92.333	R92.2	W44.A1XA	Codes in Categories T15-T19
G20.A2	G20	H50.669	H50.69	M80.0B1A	M80.0AXA	N04.29	N04.2	R92.341	R92.2	W44.A1XD	Codes in Categories T15-T19
G20.B1	G20	H50.669	H50.69	M80.0B1D	M80.0AXD	N06.20	N06.2	R92.342	R92.2	W44.A1XS	Codes in Categories T15-T19
G20.B2	G20					N06.21	N06.2	R92.343	R92.2	W44.A1XD	Codes in Categories T15-T19
						N06.22	N06.2	T56.821A	T56.891A		

Disorder

ICD-10-CM 2025

Disorder — *continued*

binocular — *continued*
 movement — *continued*
 convergence
 excess H51.12
 insufficiency H51.11
 internuclear ophthalmoplegia — *see* Ophthalmoplegia, internuclear
 palsy of conjugate gaze H51.0
 specified type NEC H51.8
 vision NEC — *see* Disorder, vision, binocular
 bipolar (I) seasonal (type I) F31.9
 and related due to a known physiological condition with
 manic features F06.33
 manic- or hypomanic-like episodes F06.33
 mixed features F06.34
 current (or most recent) episode
 depressed F31.9
 with psychotic features F31.5
 without psychotic features F31.30
 mild F31.31
 moderate F31.32
 severe (without psychotic features) F31.4
 with psychotic features F31.5
 hypomanic F31.0
 manic F31.9
 with psychotic features F31.2
 without psychotic features F31.10
 mild F31.11
 moderate F31.12
 severe (without psychotic features) F31.13
 with psychotic features F31.2
 mixed F31.60
 mild F31.61
 moderate F31.62
 severe (without psychotic features) F31.63
 with psychotic features F31.64
 severe depression (without psychotic features) F31.4
 with psychotic features F31.5
 II (type 2) F31.81
 in remission (currently) F31.70
 in full remission
 most recent episode
 depressed F31.76
 hypomanic F31.72
 manic F31.74
 mixed F31.78
 in partial remission
 most recent episode
 depressed F31.75
 hypomanic F31.71
 manic F31.73
 mixed F31.77
 organic F06.30
 single manic episode F30.9
 mild F30.11
 moderate F30.12
 severe (without psychotic symptoms) F30.13
 with psychotic symptoms F30.2
 specified NEC F31.89
 bladder N32.9
 functional NEC N31.9
 in schistosomiasis B65.0 [N33]
 specified NEC N32.89
 bleeding D68.9
 blood D75.9
 in congenital early syphilis A50.09 [D77]
 body dysmorphic F45.22
 bone M89.9
 continuity M84.9
 specified type NEC M84.80
 ankle M84.87- ✓
 fibula M84.86- ✓
 foot M84.87- ✓
 hand M84.84- ✓
 humerus M84.82- ✓
 neck M84.88
 pelvis M84.859
 radius M84.83- ✓
 rib M84.88
 shoulder M84.81- ✓
 skull M84.88
 thigh M84.85- ✓
 tibia M84.86- ✓
 ulna M84.83- ✓

Disorder — *continued*

bone — *continued*
 continuity — *continued*
 specified type — *continued*
 vertebra M84.88
 density and structure M85.9
 cyst — *see also* Cyst, bone, specified type NEC
 aneurysmal — *see* Cyst, bone, aneurysmal
 solitary — *see* Cyst, bone, solitary
 diffuse idiopathic skeletal hyperostosis — *see* Hyperostosis, ankylosing
 fibrous dysplasia (monostotic) — *see* Dysplasia, fibrous, bone
 fluorosis — *see* Fluorosis, skeletal
 hyperostosis of skull M85.2
 osteitis condensans — *see* Osteitis, condensans
 specified type NEC M85.8- ✓
 ankle M85.87- ✓
 foot M85.87- ✓
 forearm M85.83- ✓
 hand M85.84- ✓
 lower leg M85.86- ✓
 multiple sites M85.89
 neck M85.88
 rib M85.88
 shoulder M85.81- ✓
 skull M85.88
 thigh M85.85- ✓
 upper arm M85.82- ✓
 vertebra M85.88
 development and growth NEC M89.20
 carpus M89.24- ✓
 clavicle M89.21- ✓
 femur M89.25- ✓
 fibula M89.26- ✓
 finger M89.24- ✓
 humerus M89.22- ✓
 ilium M89.28
 ischium M89.28
 metacarpus M89.24- ✓
 metatarsus M89.27- ✓
 multiple sites M89.29
 neck M89.28
 radius M89.23- ✓
 rib M89.28
 scapula M89.21- ✓
 skull M89.28
 tarsus M89.27- ✓
 tibia M89.26- ✓
 toe M89.27- ✓
 ulna M89.23- ✓
 vertebra M89.28
 specified type NEC M89.8X- ✓
 brachial plexus G54.0
 branched-chain amino-acid metabolism E71.2
 specified NEC E71.19
 breast N64.9
 agalactia — *see* Agalactia
 associated with
 lactation O92.70
 specified NEC O92.79
 pregnancy O92.20
 specified NEC O92.29
 puerperium O92.20
 specified NEC O92.29
 cracked nipple — *see* Cracked nipple
 galactorrhea — *see* Galactorrhea
 hypogalactia O92.4
 lactation disorder NEC O92.79
 mastitis — *see* Mastitis
 nipple infection — *see* Infection, nipple
 retracted nipple — *see* Retraction, nipple
 specified type NEC N64.89
 Briquet's F45.0
 bullous, in diseases classified elsewhere L14
 caffeine use
 mild
 with
 caffeine-induced
 anxiety disorder F15.180
 sleep disorder F15.182
 moderate or severe
 with
 caffeine-induced
 anxiety disorder F15.280
 sleep disorder F15.282

Disorder — *continued*

cannabis use
 mild F12.10
 with
 cannabis intoxication delirium F12.121
 with perceptual disturbances F12.122
 without perceptual disturbances F12.129
 cannabis-induced
 anxiety disorder F12.180
 psychotic disorder F12.159
 sleep disorder F12.188
 in remission (early) (sustained) F12.11
 moderate or severe F12.20
 with
 cannabis intoxication
 with perceptual disturbances F12.222
 without perceptual disturbances F12.229
 cannabis-induced
 anxiety disorder F12.280
 psychotic disorder F12.259
 sleep disorder F12.288
 delirium F12.221
 in remission (early) (sustained) F12.21
 carbohydrate
 absorption, intestinal NEC E74.39
 metabolism (congenital) E74.9
 specified NEC E74.89
 cardiac, functional I51.89
 carnitine metabolism E71.40
 cartilage M94.9
 articular NEC — *see* Derangement, joint, articular
 cartilage
 chondrocalcinosis — *see* Chondrocalcinosis
 specified type NEC M94.8X- ✓
 articular — *see* Derangement, joint, articular
 cartilage
 multiple sites M94.8X0
 catatonia (due to known physiological condition) (with another mental disorder) F06.1
 catatonic
 due to (secondary to) known physiological condition F06.1
 organic F06.1
 central auditory processing H93.25
 cervical
 region NEC M53.82
 root (nerve) NEC G54.2
 character NOS F00.9
 childhood disintegrative NEC F84.3
 cholesterol and bile acid metabolism E78.70
 Barth syndrome E78.71
 other specified E78.79
 Smith-Lemli-Opitz syndrome E78.72
 choroid H31.9
 atrophy — *see* Atrophy, choroid
 degeneration — *see* Degeneration, choroid
 detachment — *see* Detachment, choroid
 dystrophy — *see* Dystrophy, choroid
 hemorrhage — *see* Hemorrhage, choroid
 rupture — *see* Rupture, choroid
 scar — *see* Scar, chorioretinal
 solar retinopathy — *see* Retinopathy, solar
 specified type NEC H31.8
 ciliary body — *see* Disorder, iris
 degeneration — *see* Degeneration, ciliary body
 coagulation (factor) — *see also* Defect, coagulation D68.9
 newborn, transient P61.6
 cocaine use
 mild F14.10
 with
 amphetamine, cocaine, or other stimulant intoxication
 with perceptual disturbances F14.122
 without perceptual disturbances F14.129
 cocaine intoxication delirium F14.121
 cocaine-induced
 anxiety disorder F14.180
 bipolar and related disorder F14.14
 depressive disorder F14.14
 obsessive-compulsive and related disorder F14.188
 psychotic disorder F14.159
 sexual dysfunction F14.181
 sleep disorder F14.182
 in remission (early) (sustained) F14.11
 moderate or severe F14.20

Chapter 2. Neoplasms (C00–D49)

Chapter-specific Guidelines with Coding Examples

The chapter-specific guidelines from the ICD-10-CM Official Guidelines for Coding and Reporting have been provided below. Along with these guidelines are coding examples, contained in the shaded boxes, that have been developed to help illustrate the coding and/or sequencing guidance found in these guidelines.

General guidelines

Chapter 2 of the ICD-10-CM contains the codes for most benign and all malignant neoplasms. Certain benign neoplasms, such as prostatic adenomas, may be found in the specific body system chapters. To properly code a neoplasm, it is necessary to determine from the record if the neoplasm is benign, in-situ, malignant, or of uncertain histologic behavior. If malignant, any secondary (metastatic) sites should also be determined.

Primary malignant neoplasms overlapping site boundaries

A primary malignant neoplasm that overlaps two or more contiguous (next to each other) sites should be classified to the subcategory/code .8 ('overlapping lesion'), unless the combination is specifically indexed elsewhere. For multiple neoplasms of the same site that are not contiguous such as tumors in different quadrants of the same breast, codes for each site should be assigned.

A 73-year-old white female with a large rapidly growing malignant tumor in the left breast extending from the upper outer quadrant into the axillary tail

C50.812 Malignant neoplasm of overlapping sites of left female breast

Explanation: Because this is a single large tumor that overlaps two contiguous sites, a single code for overlapping sites is assigned.

A 52-year old white female with two distinct lesions of the right breast, one (0.5 cm) in the upper outer quadrant and a second (1.5 cm) in the lower outer quadrant; path report indicates both lesions are malignant

C50.411 Malignant neoplasm of upper-outer quadrant of right female breast

C50.511 Malignant neoplasm of lower-outer quadrant of right female breast

Explanation: This patient has two distinct malignant lesions of right breast in adjacent quadrants. Because the lesions are not contiguous, two codes are reported.

Malignant neoplasm of ectopic tissue

Malignant neoplasms of ectopic tissue are to be coded to the site of origin mentioned, e.g., ectopic pancreatic malignant neoplasms involving the stomach are coded to malignant neoplasm of pancreas, unspecified (C25.9).

The neoplasm table in the Alphabetic Index should be referenced first. However, if the histological term is documented, that term should be referenced first, rather than going immediately to the Neoplasm Table, in order to determine which column in the Neoplasm Table is appropriate. For example, if the documentation indicates "adenoma," refer to the term in the Alphabetic Index to review the entries under this term and the instructional note to "see also neoplasm, by site, benign." The table provides the proper code based on the type of neoplasm and the site. It is important to select the proper column in the table that corresponds to the type of neoplasm. The Tabular List should then be referenced to verify that the correct code has been selected from the table and that a more specific site code does not exist.

See Section I.C.21. Factors influencing health status and contact with health services, Status, for information regarding Z15.0, codes for genetic susceptibility to cancer.

a. Admission/Encounter for treatment of primary site

If the malignancy is chiefly responsible for occasioning the patient admission/encounter and treatment is directed at the primary site, designate the primary malignancy as the principal/first-listed diagnosis.

The only exception to this guideline is if the administration of chemotherapy, immunotherapy or external beam radiation therapy is chiefly responsible for occasioning the admission/encounter. In that case, assign the appropriate Z51.-- code as the first-listed or principal diagnosis, and the underlying diagnosis or problem for which the service is being performed as a secondary diagnosis.

b. Admission/Encounter for treatment of secondary site

When a patient is admitted because of a primary neoplasm with metastasis and treatment is directed toward the secondary site only, the secondary neoplasm is designated as the principal diagnosis even though the primary malignancy is still present.

Patient with primary prostate cancer with metastasis to lungs admitted for wedge resection of mass in right lung

C78.01 Secondary malignant neoplasm of right lung

C61 Malignant neoplasm of prostate

Explanation: Since the admission is for treatment of the lung metastasis, the secondary lung metastasis is sequenced before the primary prostate cancer.

c. Coding and sequencing of complications

Coding and sequencing of complications associated with the malignancies or with the therapy thereof are subject to the following guidelines:

1) Anemia associated with malignancy

When admission/encounter is for management of an anemia associated with the malignancy, and the treatment is only for anemia, the appropriate code for the malignancy is sequenced as the principal or first-listed diagnosis followed by the appropriate code for the anemia (such as code D63.0, Anemia in neoplastic disease).

Patient is admitted for treatment of anemia in advanced colon cancer

C18.9 Malignant neoplasm of colon, unspecified

D63.0 Anemia in neoplastic disease

Explanation: Even though the admission was solely to treat the anemia, this guideline indicates that the code for the malignancy is sequenced first.

2) Anemia associated with chemotherapy, immunotherapy and radiation therapy

When the admission/encounter is for management of an anemia associated with an adverse effect of the administration of chemotherapy or immunotherapy and the only treatment is for the anemia, the anemia code is sequenced first followed by the appropriate codes for the neoplasm and the adverse effect (T45.1X5, Adverse effect of antineoplastic and immunosuppressive drugs).

A 56-year-old Hispanic male with grade II follicular lymphoma involving multiple lymph node sites referred for blood transfusion to treat anemia due to chemotherapy

D64.81 Anemia due to antineoplastic chemotherapy

C82.18 Follicular lymphoma grade II, lymph nodes of multiple sites

T45.1X5A Adverse effect of antineoplastic and immunosuppressive drugs, initial encounter

Explanation: The code for the anemia is sequenced first followed by the code for the malignant neoplasm and lastly the code for the adverse effect.

When the admission/encounter is for management of an anemia associated with an adverse effect of radiotherapy, the anemia code should be sequenced first, followed by the appropriate neoplasm code and code Y84.2, Radiological procedure and radiotherapy as the cause of abnormal reaction of the patient, or of later complication, without mention of misadventure at the time of the procedure.

- D82.8** Immunodeficiency associated with other specified major defects HCC
- D82.9** Immunodeficiency associated with major defect, unspecified HCC
- √4th** **D83** Common variable immunodeficiency
- D83.0** Common variable immunodeficiency with predominant abnormalities of B-cell numbers and function CC HCC
- D83.1** Common variable immunodeficiency with predominant immunoregulatory T-cell disorders CC HCC
- D83.2** Common variable immunodeficiency with autoantibodies to B- or T-cells CC HCC
- D83.8** Other common variable immunodeficiencies CC HCC
- D83.9** Common variable immunodeficiency, unspecified CC HCC
- √4th** **D84** Other immunodeficiencies
- D84.0** Lymphocyte function antigen-1 [LFA-1] defect HCC
- D84.1** Defects in the complement system HCC
C1 esterase inhibitor [C1-INH] deficiency
- √5th** **D84.8** Other specified immunodeficiencies
- AHA:** 2020,4Q,10-12
- D84.81** Immunodeficiency due to conditions classified elsewhere CC HCC
Code first underlying condition, such as:
chromosomal abnormalities (Q90-Q99)
diabetes mellitus (E08-E13)
malignant neoplasms (C00-C96)
EXCLUDES 1 certain disorders involving the immune mechanism (D80-D83, D84.0, D84.1, D84.9)
human immunodeficiency virus [HIV] disease (B20)
AHA: 2021,1Q,52
- √6th** **D84.82** Immunodeficiency due to drugs and external causes
- D84.821** Immunodeficiency due to drugs CC HCC
Immunodeficiency due to (current or past) medication
Use additional code for adverse effect if applicable, to identify adverse effect of drug (T36-T50 with fifth or six character 5)
Use additional code, if applicable, for associated long term (current) drug therapy drug or medication such as:
long term (current) drug therapy systemic steroids (Z79.52)
other long term (current) drug therapy (Z79.899)
- D84.822** Immunodeficiency due to external causes CC HCC
Code also, if applicable, radiological procedure and radiotherapy (Y84.2)
Use additional code for external cause such as:
exposure to ionizing radiation (W88)
- D84.89** Other immunodeficiencies CC HCC
- D84.9** Immunodeficiency, unspecified CC HCC
Immunocompromised NOS
Immunodeficient NOS
Immunosuppressed NOS
AHA: 2020,4Q,10
- √4th** **D86** Sarcoidosis
DEF: Clustering of immune cells resulting in granuloma formation. Often affects the lungs and lymphatic system but can occur in other body sites.
- D86.0** Sarcoidosis of lung HCC
- D86.1** Sarcoidosis of lymph nodes
- D86.2** Sarcoidosis of lung with sarcoidosis of lymph nodes HCC
- D86.3** Sarcoidosis of skin
- √5th** **D86.8** Sarcoidosis of other sites
- D86.81** Sarcoid meningitis
- D86.82** Multiple cranial nerve palsies in sarcoidosis HCC
- D86.83** Sarcoid iridocyclitis
- D86.84** Sarcoid pyelonephritis
Tubulo-interstitial nephropathy in sarcoidosis
- D86.85** Sarcoid myocarditis
- D86.86** Sarcoid arthropathy
Polyarthritis in sarcoidosis
- D86.87** Sarcoid myositis
- D86.89** Sarcoidosis of other sites
Hepatic granuloma
Uveoparotid fever [Heerfordt]
- D86.9** Sarcoidosis, unspecified
- √4th** **D89** Other disorders involving the immune mechanism, not elsewhere classified
- EXCLUDES 1** hyperglobulinemia NOS (R77.1)
monoclonal gammopathy (of undetermined significance) (D47.2)
EXCLUDES 2 transplant failure and rejection (T86.-)
- D89.0** Polyclonal hypergammaglobulinemia
Benign hypergammaglobulinemic purpura
Polyclonal gammopathy NOS
- D89.1** Cryoglobulinemia HCC
Cryoglobulinemic purpura
Cryoglobulinemic vasculitis
Essential cryoglobulinemia
Idiopathic cryoglobulinemia
Mixed cryoglobulinemia
Primary cryoglobulinemia
Secondary cryoglobulinemia
- D89.2** Hypergammaglobulinemia, unspecified
- D89.3** Immune reconstitution syndrome HCC
Immune reconstitution inflammatory syndrome [IRIS]
Use additional code for adverse effect, if applicable, to identify drug (T36-T50 with fifth or sixth character 5)
- √5th** **D89.4** Mast cell activation syndrome and related disorders HCC
EXCLUDES 1 aggressive systemic mastocytosis (C96.21)
congenital cutaneous mastocytosis (Q82.2)
(non-congenital) cutaneous mastocytosis (D47.01)
(indolent) systemic mastocytosis (D47.02)
malignant mast cell neoplasm (C96.2-)
malignant mastocytoma (C96.29)
mast cell leukemia (C94.3-)
mast cell sarcoma (C96.22)
mastocytoma NOS (D47.09)
other mast cell neoplasms of uncertain behavior (D47.09)
systemic mastocytosis associated with a clonal hematologic non-mast cell lineage disease (SM-AHNMD) (D47.02)
AHA: 2016,4Q,11
- D89.40** Mast cell activation, unspecified HCC
Mast cell activation disorder, unspecified
Mast cell activation syndrome, NOS
- D89.41** Monoclonal mast cell activation syndrome HCC
- D89.42** Idiopathic mast cell activation syndrome HCC
- D89.43** Secondary mast cell activation HCC
Secondary mast cell activation syndrome
Code also underlying etiology, if known
- D89.44** Hereditary alpha tryptasemia HCC
Use additional code, if applicable, for:
allergy status, other than to drugs and biological substances (Z91.0-)
personal history of anaphylaxis (Z87.892)
AHA: 2021,4Q,8
- D89.49** Other mast cell activation disorder HCC
- √5th** **D89.8** Other specified disorders involving the immune mechanism, not elsewhere classified
- √6th** **D89.81** Graft-versus-host disease HCC
Code first underlying cause, such as:
complications of blood transfusion (T80.89)
complications of transplanted organs and tissue (T86.-)
Use additional code to identify associated manifestations, such as:
desquamative dermatitis (L30.8)
diarrhea (R19.7)
elevated bilirubin (R17)
hair loss (L65.9)
- D89.810** Acute graft-versus-host disease CC UPD HCC
- D89.811** Chronic graft-versus-host disease CC UPD HCC

Chapter 9. Diseases of the Circulatory System (I00-I99)

EXCLUDES 2 certain conditions originating in the perinatal period (P04-P96)
 certain infectious and parasitic diseases (A00-B99)
 complications of pregnancy, childbirth and the puerperium (O00-O9A)
 congenital malformations, deformations, and chromosomal abnormalities (Q00-Q99)
 endocrine, nutritional and metabolic diseases (E00-E88)
 injury, poisoning and certain other consequences of external causes (S00-T88)
 neoplasms (C00-D49)
 symptoms, signs and abnormal clinical and laboratory findings, not elsewhere classified (R00-R94)
 systemic connective tissue disorders (M30-M36)
 transient cerebral ischemic attacks and related syndromes (G45.-)

This chapter contains the following blocks:

I00-I02	Acute rheumatic fever
I05-I09	Chronic rheumatic heart diseases
I10-I1A	Hypertensive diseases
I20-I25	Ischemic heart diseases
I26-I28	Pulmonary heart disease and diseases of pulmonary circulation
I30-I5A	Other forms of heart disease
I60-I69	Cerebrovascular diseases
I70-I79	Diseases of arteries, arterioles and capillaries
I80-I89	Diseases of veins, lymphatic vessels and lymph nodes, not elsewhere classified
I95-I99	Other and unspecified disorders of the circulatory system

Acute rheumatic fever (I00-I02)

DEF: Rheumatic fever: Inflammatory disease that can follow a throat infection by group A streptococci. Complications can involve the joints (arthritis), subcutaneous tissue (nodules), skin (erythema marginatum), heart (carditis), or brain (chorea).

I00 Rheumatic fever without heart involvement

INCLUDES arthritis, rheumatic, acute or subacute

EXCLUDES 1 rheumatic fever with heart involvement (I01.0-I01.9)

√4# I01 Rheumatic fever with heart involvement

EXCLUDES 1 chronic diseases of rheumatic origin (I05-I09) unless rheumatic fever is also present or there is evidence of reactivation or activity of the rheumatic process

I01.0 Acute rheumatic pericarditis

Any condition in I00 with pericarditis
 Rheumatic pericarditis (acute)

EXCLUDES 1 acute pericarditis not specified as rheumatic (I30.-)

I01.1 Acute rheumatic endocarditis

Any condition in I00 with endocarditis or valvulitis
 Acute rheumatic valvulitis

I01.2 Acute rheumatic myocarditis

Any condition in I00 with myocarditis

I01.8 Other acute rheumatic heart disease

Any condition in I00 with other or multiple types of heart involvement
 Acute rheumatic pancarditis

I01.9 Acute rheumatic heart disease, unspecified

Any condition in I00 with unspecified type of heart involvement
 Rheumatic carditis, acute
 Rheumatic heart disease, active or acute

√4# I02 Rheumatic chorea

INCLUDES Sydenham's chorea

EXCLUDES 1 chorea NOS (G25.5)

Huntington's chorea (G10)

I02.0 Rheumatic chorea with heart involvement

Chorea NOS with heart involvement
 Rheumatic chorea with heart involvement of any type classifiable under I01.-

I02.9 Rheumatic chorea without heart involvement

Rheumatic chorea NOS

Chronic rheumatic heart diseases (I05-I09)**√4# I05 Rheumatic mitral valve diseases**

INCLUDES conditions classifiable to both I05.0 and I05.2-I05.9, whether specified as rheumatic or not

EXCLUDES 1 mitral valve disease specified as nonrheumatic (I34.-)
 mitral valve disease with aortic and/or tricuspid valve involvement (I08.-)

I05.0 Rheumatic mitral stenosis

Mitral (valve) obstruction (rheumatic)

I05.1 Rheumatic mitral insufficiency

Rheumatic mitral incompetence
 Rheumatic mitral regurgitation

EXCLUDES 1 mitral insufficiency not specified as rheumatic (I34.0)

I05.2 Rheumatic mitral stenosis with insufficiency

Rheumatic mitral stenosis with incompetence or regurgitation

I05.8 Other rheumatic mitral valve diseases

Rheumatic mitral (valve) failure

I05.9 Rheumatic mitral valve disease, unspecified

Rheumatic mitral (valve) disorder (chronic) NOS

√4# I06 Rheumatic aortic valve diseases

EXCLUDES 1 aortic valve disease not specified as rheumatic (I35.-)
 aortic valve disease with mitral and/or tricuspid valve involvement (I08.-)

I06.0 Rheumatic aortic stenosis

Rheumatic aortic (valve) obstruction

I06.1 Rheumatic aortic insufficiency

Rheumatic aortic incompetence
 Rheumatic aortic regurgitation

I06.2 Rheumatic aortic stenosis with insufficiency

Rheumatic aortic stenosis with incompetence or regurgitation

I06.8 Other rheumatic aortic valve diseases**I06.9 Rheumatic aortic valve disease, unspecified**

Rheumatic aortic (valve) disease NOS

√4# I07 Rheumatic tricuspid valve diseases

INCLUDES rheumatic tricuspid valve diseases specified as rheumatic or unspecified

EXCLUDES 1 tricuspid valve disease specified as nonrheumatic (I36.-)
 tricuspid valve disease with aortic and/or mitral valve involvement (I08.-)

I07.0 Rheumatic tricuspid stenosis

Tricuspid (valve) stenosis (rheumatic)

I07.1 Rheumatic tricuspid insufficiency

Tricuspid (valve) insufficiency (rheumatic)

I07.2 Rheumatic tricuspid stenosis and insufficiency**I07.8 Other rheumatic tricuspid valve diseases****I07.9 Rheumatic tricuspid valve disease, unspecified**

Rheumatic tricuspid valve disorder NOS

I08 Multiple valve diseases

√4# INCLUDES multiple valve diseases specified as rheumatic or unspecified

EXCLUDES 1 endocarditis, valve unspecified (I38)
 multiple valve disease specified as nonrheumatic (I34.-, I35.-, I36.-, I37.-, I38.-, Q22.-, Q23.-, Q24.8-)
 rheumatic valve disease NOS (I09.1)

I08.0 Rheumatic disorders of both mitral and aortic valves

Involvement of both mitral and aortic valves specified as rheumatic or unspecified

AHA: 2019,2Q,5

I08.1 Rheumatic disorders of both mitral and tricuspid valves**I08.2 Rheumatic disorders of both aortic and tricuspid valves****I08.3 Combined rheumatic disorders of mitral, aortic and tricuspid valves****I08.8 Other rheumatic multiple valve diseases****I08.9 Rheumatic multiple valve disease, unspecified****√4# I09 Other rheumatic heart diseases****I09.0 Rheumatic myocarditis**

EXCLUDES 1 myocarditis not specified as rheumatic (I51.4)

I09.1 Rheumatic diseases of endocardium, valve unspecified

Rheumatic endocarditis (chronic)
 Rheumatic valvulitis (chronic)

EXCLUDES 1 endocarditis, valve unspecified (I38)

I09.2 Chronic rheumatic pericarditis

Adherent pericardium, rheumatic
 Chronic rheumatic mediastinopericarditis
 Chronic rheumatic myopericarditis

EXCLUDES 1 chronic pericarditis not specified as rheumatic (I31.-)

√5# I09.8 Other specified rheumatic heart diseases**I09.81 Rheumatic heart failure**

CC HCC
 Use additional code to identify type of heart failure (I50.-)

I09.89 Other specified rheumatic heart diseases

Rheumatic disease of pulmonary valve

I09.9 Rheumatic heart disease, unspecified

Rheumatic carditis

EXCLUDES 1 rheumatoid carditis (M05.31)

- 009.892 Supervision of other high risk pregnancies, **second trimester** UPD M ♀
- 009.893 Supervision of other high risk pregnancies, **third trimester** UPD M ♀
- 009.899 Supervision of other high risk pregnancies, unspecified trimester UPD M ♀
- √5th 009.9 Supervision of high risk pregnancy, unspecified
 - 009.90 Supervision of high risk pregnancy, unspecified, unspecified trimester UPD M ♀
 - 009.91 Supervision of high risk pregnancy, unspecified, **first trimester** UPD M ♀
 - 009.92 Supervision of high risk pregnancy, unspecified, **second trimester** UPD M ♀
 - 009.93 Supervision of high risk pregnancy, unspecified, **third trimester** UPD M ♀

Edema, proteinuria and hypertensive disorders in pregnancy, childbirth and the puerperium (O10-O16)

AHA: 2016,4Q,50

- √4th O10 **Pre-existing hypertension complicating pregnancy, childbirth and the puerperium**
 - [INCLUDES]** pre-existing hypertension with pre-existing proteinuria complicating pregnancy, childbirth and the puerperium
 - [EXCLUDES 2]** pre-existing hypertension with superimposed pre-eclampsia complicating pregnancy, childbirth and the puerperium (O11.-)
- √5th O10.0 **Pre-existing essential hypertension complicating pregnancy, childbirth and the puerperium**

Any condition in I10 specified as a reason for obstetric care during pregnancy, childbirth or the puerperium

 - √6th O10.01 **Pre-existing essential hypertension complicating pregnancy**
 - O10.011 Pre-existing essential hypertension complicating pregnancy, **first trimester** CC M ♀
 - O10.012 Pre-existing essential hypertension complicating pregnancy, **second trimester** CC M ♀
 - O10.013 Pre-existing essential hypertension complicating pregnancy, **third trimester** CC M ♀
 - O10.019 Pre-existing essential hypertension complicating pregnancy, unspecified trimester M ♀
 - O10.02 Pre-existing essential hypertension complicating **childbirth** CC M ♀
 - O10.03 Pre-existing essential hypertension complicating the **puerperium** M ♀
- √5th O10.1 **Pre-existing hypertensive heart disease complicating pregnancy, childbirth and the puerperium**

Any condition in I11 specified as a reason for obstetric care during pregnancy, childbirth or the puerperium

Use additional code from I11 to identify the type of hypertensive heart disease

 - √6th O10.11 **Pre-existing hypertensive heart disease complicating pregnancy**
 - O10.111 Pre-existing hypertensive heart disease complicating pregnancy, **first trimester** M ♀
 - O10.112 Pre-existing hypertensive heart disease complicating pregnancy, **second trimester** M ♀
 - O10.113 Pre-existing hypertensive heart disease complicating pregnancy, **third trimester** M ♀
 - O10.119 Pre-existing hypertensive heart disease complicating pregnancy, unspecified trimester M ♀
 - O10.12 Pre-existing hypertensive heart disease complicating **childbirth** M ♀
 - O10.13 Pre-existing hypertensive heart disease complicating the **puerperium** M ♀

- √5th O10.2 **Pre-existing hypertensive chronic kidney disease complicating pregnancy, childbirth and the puerperium**

Any condition in I12 specified as a reason for obstetric care during pregnancy, childbirth or the puerperium

Use additional code from I12 to identify the type of hypertensive chronic kidney disease

 - √6th O10.21 **Pre-existing hypertensive chronic kidney disease complicating pregnancy**
 - O10.211 Pre-existing hypertensive chronic kidney disease complicating pregnancy, **first trimester** M ♀
 - O10.212 Pre-existing hypertensive chronic kidney disease complicating pregnancy, **second trimester** M ♀
 - O10.213 Pre-existing hypertensive chronic kidney disease complicating pregnancy, **third trimester** M ♀
 - O10.219 Pre-existing hypertensive chronic kidney disease complicating pregnancy, unspecified trimester M ♀
 - O10.22 Pre-existing hypertensive chronic kidney disease complicating **childbirth** M ♀
 - O10.23 Pre-existing hypertensive chronic kidney disease complicating the **puerperium** M ♀
- √5th O10.3 **Pre-existing hypertensive heart and chronic kidney disease complicating pregnancy, childbirth and the puerperium**

Any condition in I13 specified as a reason for obstetric care during pregnancy, childbirth or the puerperium

Use additional code from I13 to identify the type of hypertensive heart and chronic kidney disease

 - √6th O10.31 **Pre-existing hypertensive heart and chronic kidney disease complicating pregnancy**
 - O10.311 Pre-existing hypertensive heart and chronic kidney disease complicating pregnancy, **first trimester** M ♀
 - O10.312 Pre-existing hypertensive heart and chronic kidney disease complicating pregnancy, **second trimester** M ♀
 - O10.313 Pre-existing hypertensive heart and chronic kidney disease complicating pregnancy, **third trimester** M ♀
 - O10.319 Pre-existing hypertensive heart and chronic kidney disease complicating pregnancy, unspecified trimester M ♀
 - O10.32 Pre-existing hypertensive heart and chronic kidney disease complicating **childbirth** M ♀
 - O10.33 Pre-existing hypertensive heart and chronic kidney disease complicating the **puerperium** M ♀
- √5th O10.4 **Pre-existing secondary hypertension complicating pregnancy, childbirth and the puerperium**

Any condition in I15 specified as a reason for obstetric care during pregnancy, childbirth or the puerperium

Use additional code from I15 to identify the type of secondary hypertension

 - √6th O10.41 **Pre-existing secondary hypertension complicating pregnancy**
 - O10.411 Pre-existing secondary hypertension complicating pregnancy, **first trimester** CC M ♀
 - O10.412 Pre-existing secondary hypertension complicating pregnancy, **second trimester** CC M ♀
 - O10.413 Pre-existing secondary hypertension complicating pregnancy, **third trimester** CC M ♀
 - O10.419 Pre-existing secondary hypertension complicating pregnancy, unspecified trimester M ♀
 - O10.42 Pre-existing secondary hypertension complicating **childbirth** MCC M ♀
 - O10.43 Pre-existing secondary hypertension complicating the **puerperium** CC M ♀
- √5th O10.9 **Unspecified pre-existing hypertension complicating pregnancy, childbirth and the puerperium**
 - √6th O10.91 **Unspecified pre-existing hypertension complicating pregnancy**
 - O10.911 Unspecified pre-existing hypertension complicating pregnancy, **first trimester** CC M ♀
 - O10.912 Unspecified pre-existing hypertension complicating pregnancy, **second trimester** CC M ♀

√6th T83.09 **Other mechanical complication of urinary catheter**

Obstruction (mechanical) of urinary catheter
Perforation of urinary catheter
Protrusion of urinary catheter

√7th T83.090 **Other mechanical complication of cystostomy catheter** **CC HCC****√7th** T83.091 **Other mechanical complication of indwelling urethral catheter** **HCC****√7th** T83.092 **Other mechanical complication of nephrostomy catheter** **HCC****√7th** T83.098 **Other mechanical complication of other urinary catheter** **HCC**

Other mechanical complication of Hopkins catheter
Other mechanical complication of ileostomy catheter
Other mechanical complication of urostomy catheter

√5th T83.1 **Mechanical complication of other urinary devices and implants****√6th** T83.11 **Breakdown (mechanical) of other urinary devices and implants****√7th** T83.110 **Breakdown (mechanical) of urinary electronic stimulator device** **CC HCC**

EXCLUDES 2 *breakdown (mechanical) of electrode (lead) for sacral nerve neurostimulator (T85.111)*
breakdown (mechanical) of implanted electronic sacral neurostimulator, pulse generator or receiver (T85.113)

√7th T83.111 **Breakdown (mechanical) of implanted urinary sphincter** **CC HCC****√7th** T83.112 **Breakdown (mechanical) of indwelling ureteral stent** **CC HCC****√7th** T83.113 **Breakdown (mechanical) of other urinary stents** **CC HCC**

Breakdown (mechanical) of ileal conduit stent
Breakdown (mechanical) of nephroureteral stent

√7th T83.118 **Breakdown (mechanical) of other urinary devices and implants** **CC HCC****√6th** T83.12 **Displacement of other urinary devices and implants**

Malposition of other urinary devices and implants

√7th T83.120 **Displacement of urinary electronic stimulator device** **CC HCC**

EXCLUDES 2 *displacement of electrode (lead) for sacral nerve neurostimulator (T85.121)*
displacement of implanted electronic sacral neurostimulator, pulse generator or receiver (T85.123)

√7th T83.121 **Displacement of implanted urinary sphincter** **CC HCC****√7th** T83.122 **Displacement of indwelling ureteral stent** **CC HCC****√7th** T83.123 **Displacement of other urinary stents** **CC HCC**

Displacement of ileal conduit stent
Displacement of nephroureteral stent

√7th T83.128 **Displacement of other urinary devices and implants** **CC HCC****√6th** T83.19 **Other mechanical complication of other urinary devices and implants**

Leakage of other urinary devices and implants
Obstruction (mechanical) of other urinary devices and implants

Perforation of other urinary devices and implants

Protrusion of other urinary devices and implants

√7th T83.190 **Other mechanical complication of urinary electronic stimulator device** **CC HCC**

EXCLUDES 2 *other mechanical complication of electrode (lead) for sacral nerve*

neurostimulator (T85.191)

other mechanical complication of implanted electronic

sacral neurostimulator,

pulse generator or

receiver (T85.193)

√7th T83.191 **Other mechanical complication of implanted urinary sphincter** **CC HCC****√7th** T83.192 **Other mechanical complication of indwelling ureteral stent** **CC HCC****√7th** T83.193 **Other mechanical complication of other urinary stent** **CC HCC**

Other mechanical complication of ileal

conduit stent

Other mechanical complication of

nephroureteral stent

√7th T83.198 **Other mechanical complication of other urinary devices and implants** **CC HCC****√5th** T83.2 **Mechanical complication of graft of urinary organ****√x7th** T83.21 **Breakdown (mechanical) of graft of urinary organ** **CC HCC****√x7th** T83.22 **Displacement of graft of urinary organ** **CC HCC**

Malposition of graft of urinary organ

√x7th T83.23 **Leakage of graft of urinary organ** **CC HCC****√x7th** T83.24 **Erosion of graft of urinary organ** **CC HCC****√x7th** T83.25 **Exposure of graft of urinary organ** **CC HCC****√x7th** T83.29 **Other mechanical complication of graft of urinary organ** **CC HCC**

Obstruction (mechanical) of graft of urinary organ

Perforation of graft of urinary organ

Protrusion of graft of urinary organ

√5th T83.3 **Mechanical complication of intrauterine contraceptive device****√x7th** T83.31 **Breakdown (mechanical) of intrauterine contraceptive device** ♀**√x7th** T83.32 **Displacement of intrauterine contraceptive device** ♀

Malposition of intrauterine contraceptive device

Missing string of intrauterine contraceptive device

AHA: 2018,1Q,5

√x7th T83.39 **Other mechanical complication of intrauterine contraceptive device** ♀

Leakage of intrauterine contraceptive device

Obstruction (mechanical) of intrauterine

contraceptive device

Perforation of intrauterine contraceptive device

Protrusion of intrauterine contraceptive device

√5th T83.4 **Mechanical complication of other prosthetic devices, implants and grafts of genital tract****√6th** T83.41 **Breakdown (mechanical) of other prosthetic devices, implants and grafts of genital tract****√7th** T83.410 **Breakdown (mechanical) of implanted penile prosthesis** **CC HCC** ♂

Breakdown (mechanical) of penile

prosthesis cylinder

Breakdown (mechanical) of penile

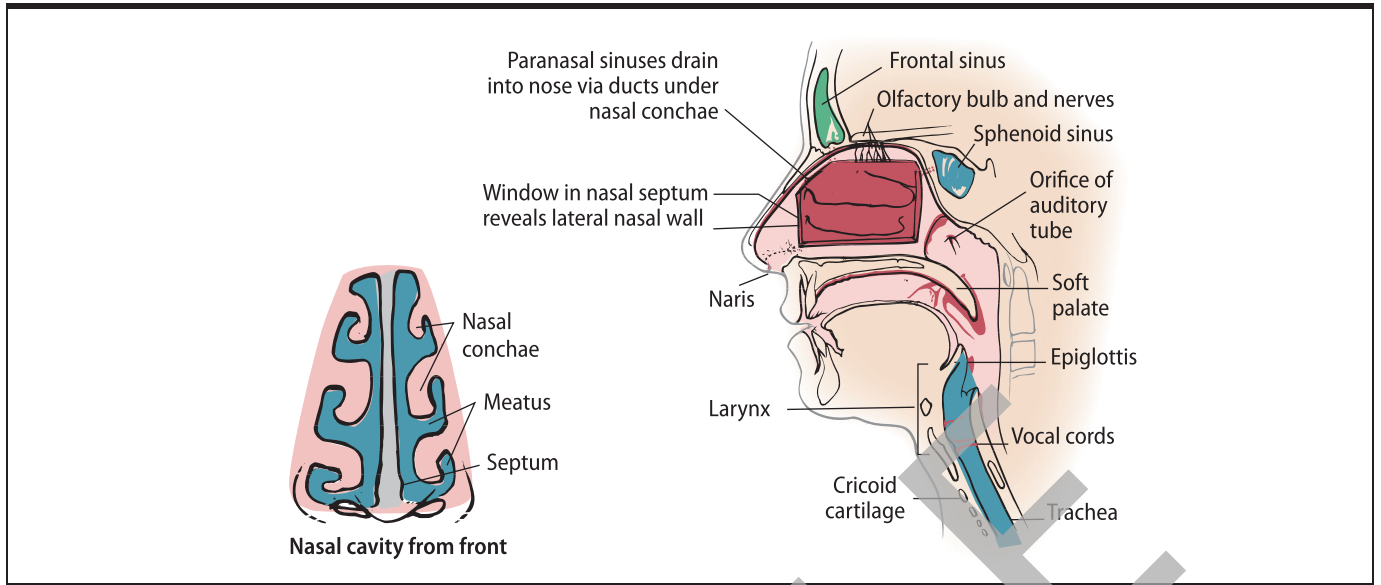
prosthesis pump

Breakdown (mechanical) of penile

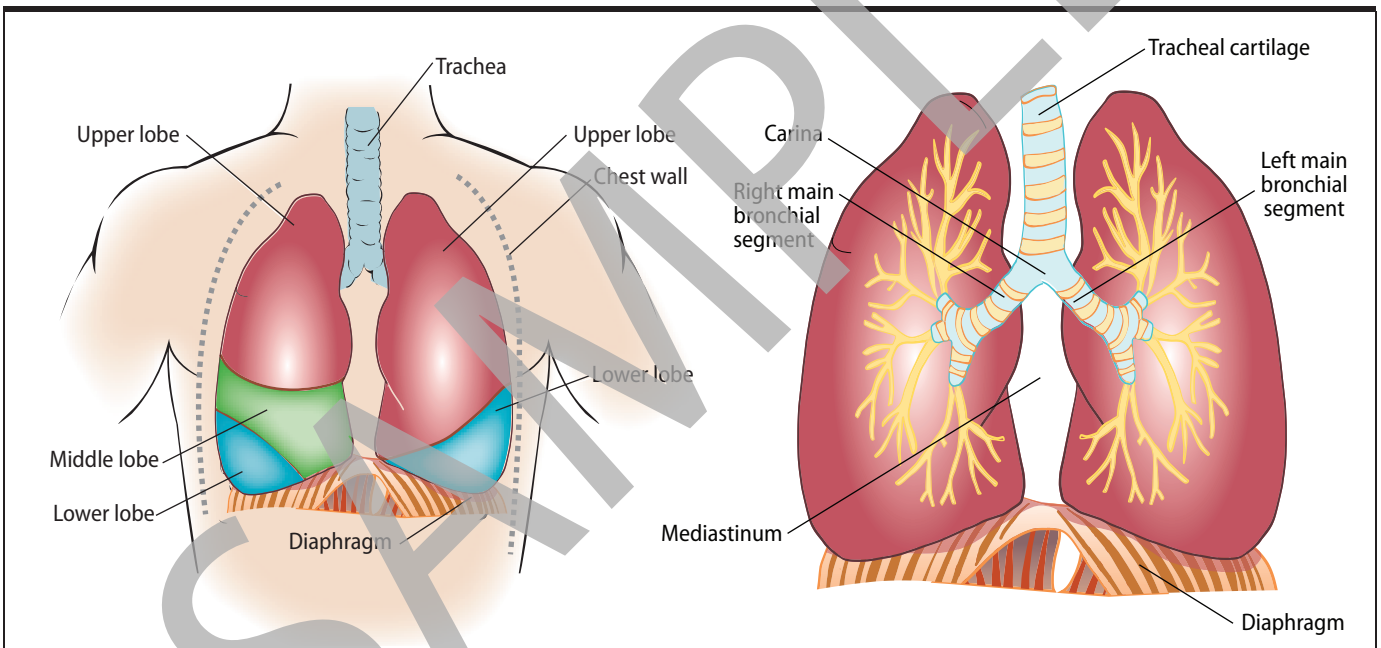
prosthesis reservoir

√7th T83.411 **Breakdown (mechanical) of implanted testicular prosthesis** **CC HCC****√7th** T83.418 **Breakdown (mechanical) of other prosthetic devices, implants and grafts of genital tract** **CC HCC**

Upper Respiratory System



Lower Respiratory System



Paranasal Sinuses

